



45 Park Grove

Bramley, Rotherham, S66 2RZ

Guide Price £120,000



45 Park Grove



Description

Guide Price £120k-£125k.

This two bedroom mid terrace property offers an excellent opportunity for first-time buyers looking to step onto the property ladder, as well as investors seeking a promising addition to their portfolio.

Upon entering the property, you are welcomed into an inviting living room, providing a comfortable and versatile space for relaxation and entertaining. The living area flows through to the adjoining kitchen, which offers good functionality.

Upstairs, the property comprises two bedrooms, suitable for a small family, guests, or a home office setup. A family bathroom completes the first floor accommodation.

Externally, the property benefits from a rear courtyard, offering a low maintenance outdoor space ideal for seating or light gardening.

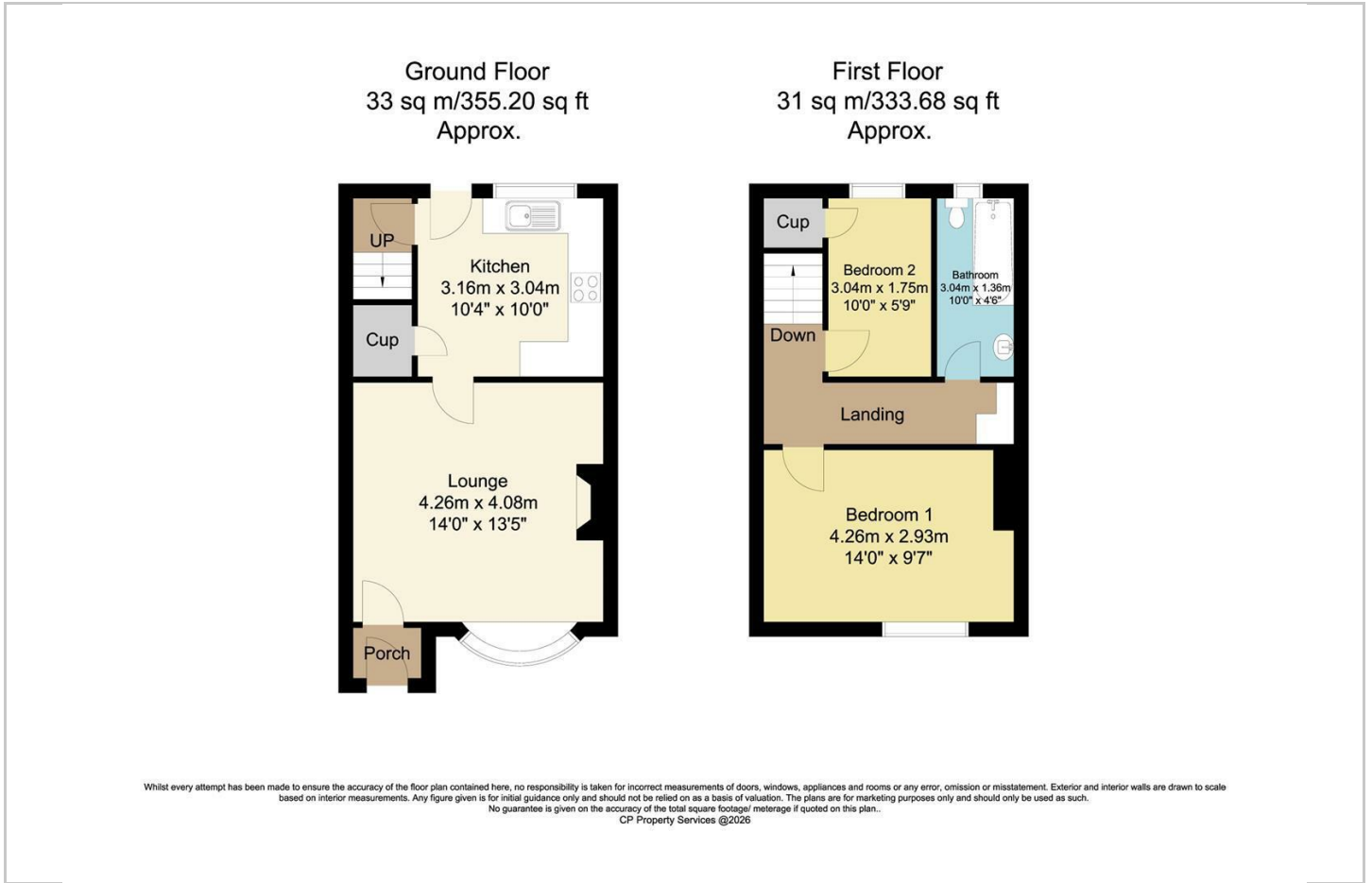
With its practical layout, potential for your own stamp and appealing price point, this home represents a fantastic opportunity not to be missed.

- FIRST TIME BUYERS & INVESTORS
- NO UPWARD CHAIN
- ACCESS TO MAJOR MORTORWAY LINKS
- GAS CENTRAL HEATING
- TAX BAND A
- TWO BEDROOM MID TERRACE
- CLOSE TO LOCAL AMENITIES
- ENCLOSED REAR COURTYARD
- FREEHOLD
- EARLY VIEWINGS ADVISED





Floor Plan



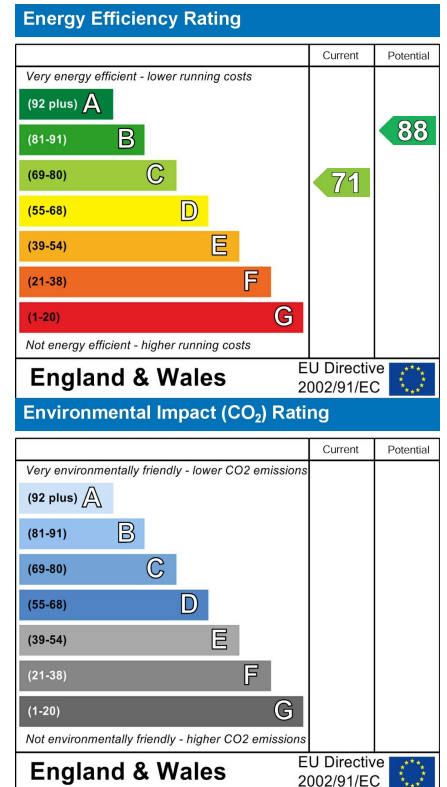
Area Map



Viewing

Please contact our ELR Wickersley Office on 01709 917676 if you wish to arrange a viewing appointment for this property or require further information.

Energy Efficiency Graph



These particulars, whilst believed to be accurate are set out as a general outline only for guidance and do not constitute any part of an offer or contract. Intending purchasers should not rely on them as statements of representation of fact, but must satisfy themselves by inspection or otherwise as to their accuracy. No person in this firm's employment has the authority to make or give any representation or warranty in respect of the property.